

# Adolescence

is the age at  
which children  
stop asking  
questions  
because they  
know all the  
answers.

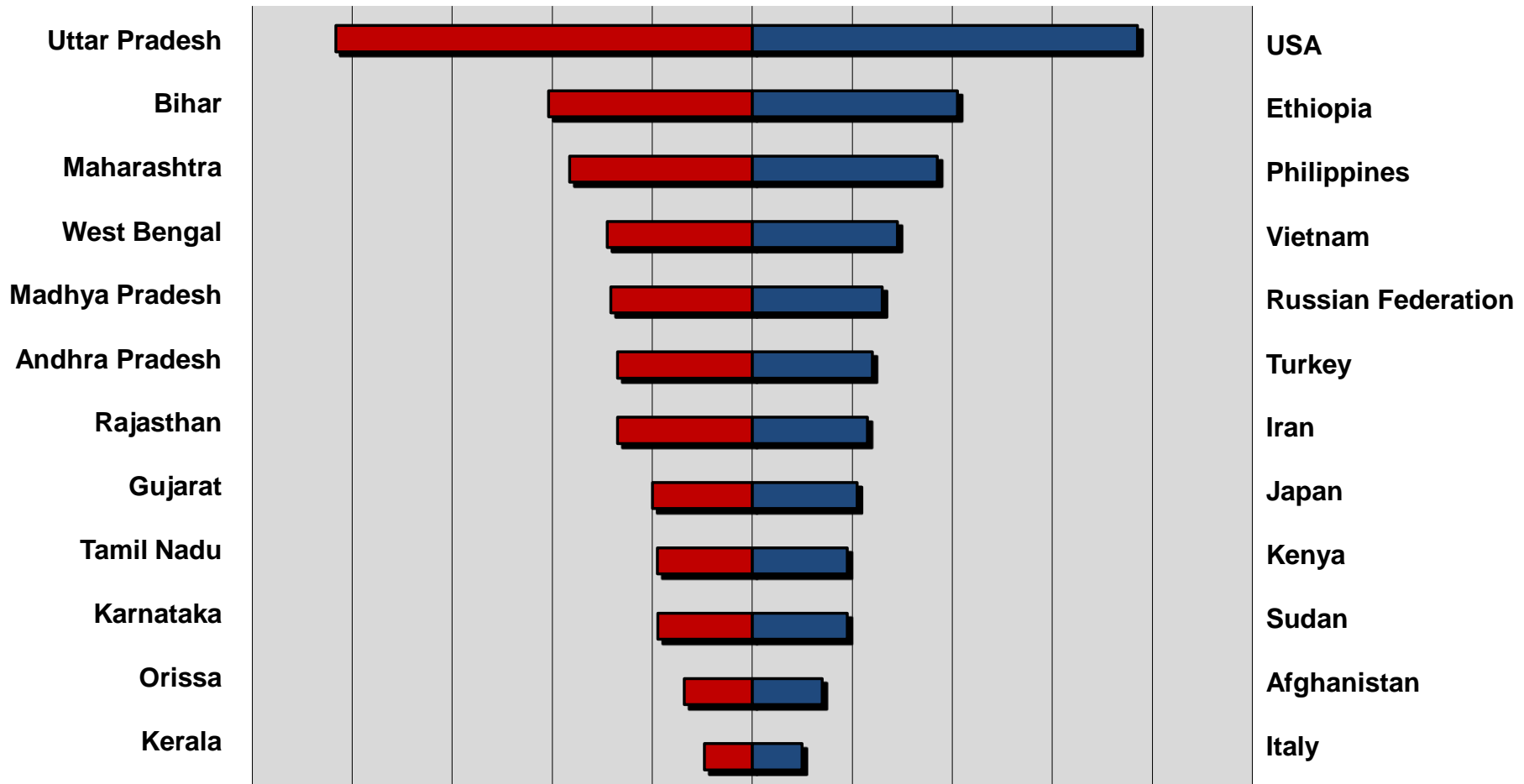


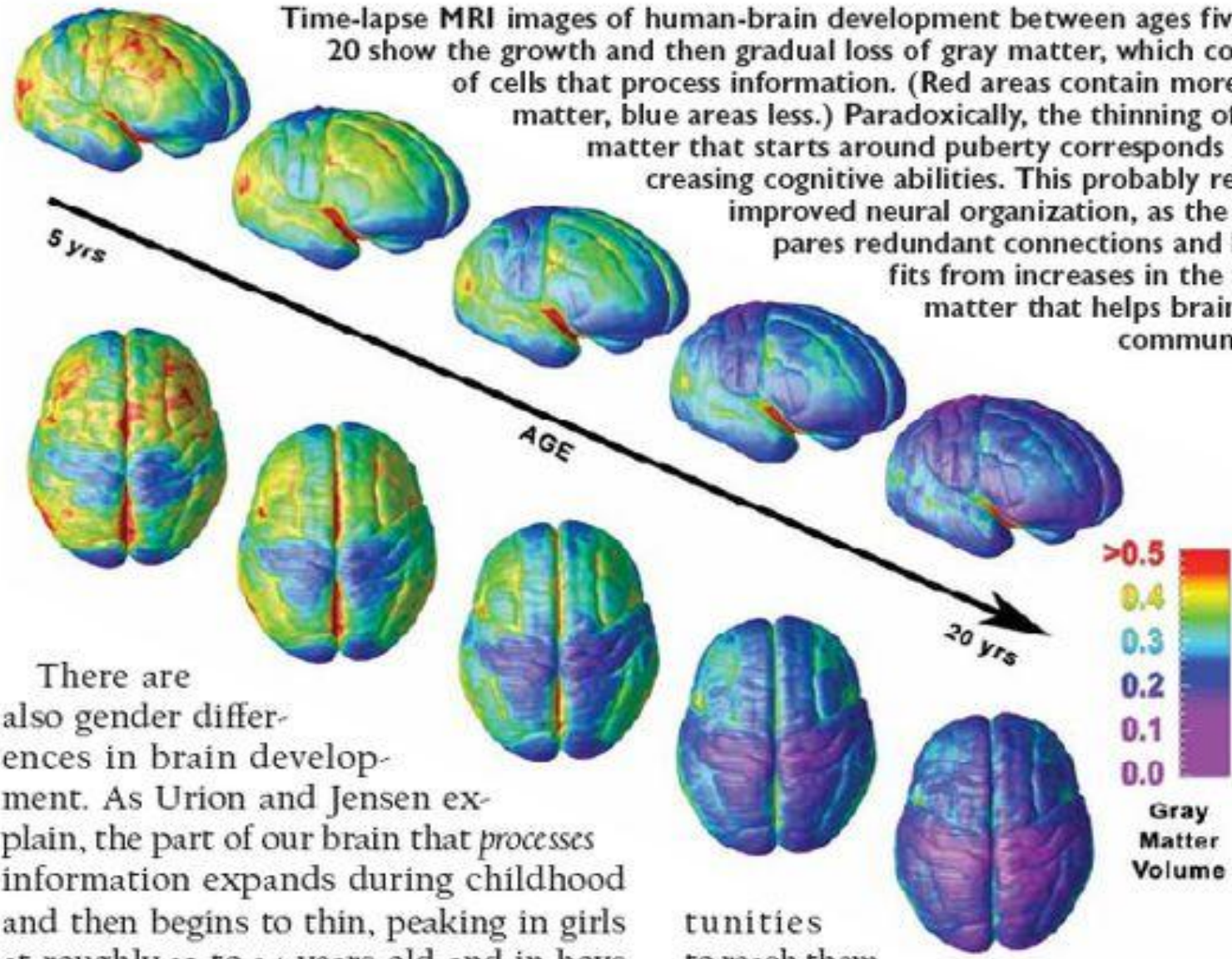
# India: The scale of things

Population: 1,156 million (under 18 years): 424 million (37%)

Population: 1210 million (census 2011 P)

**Many states have child populations similar to the child population of large countries**



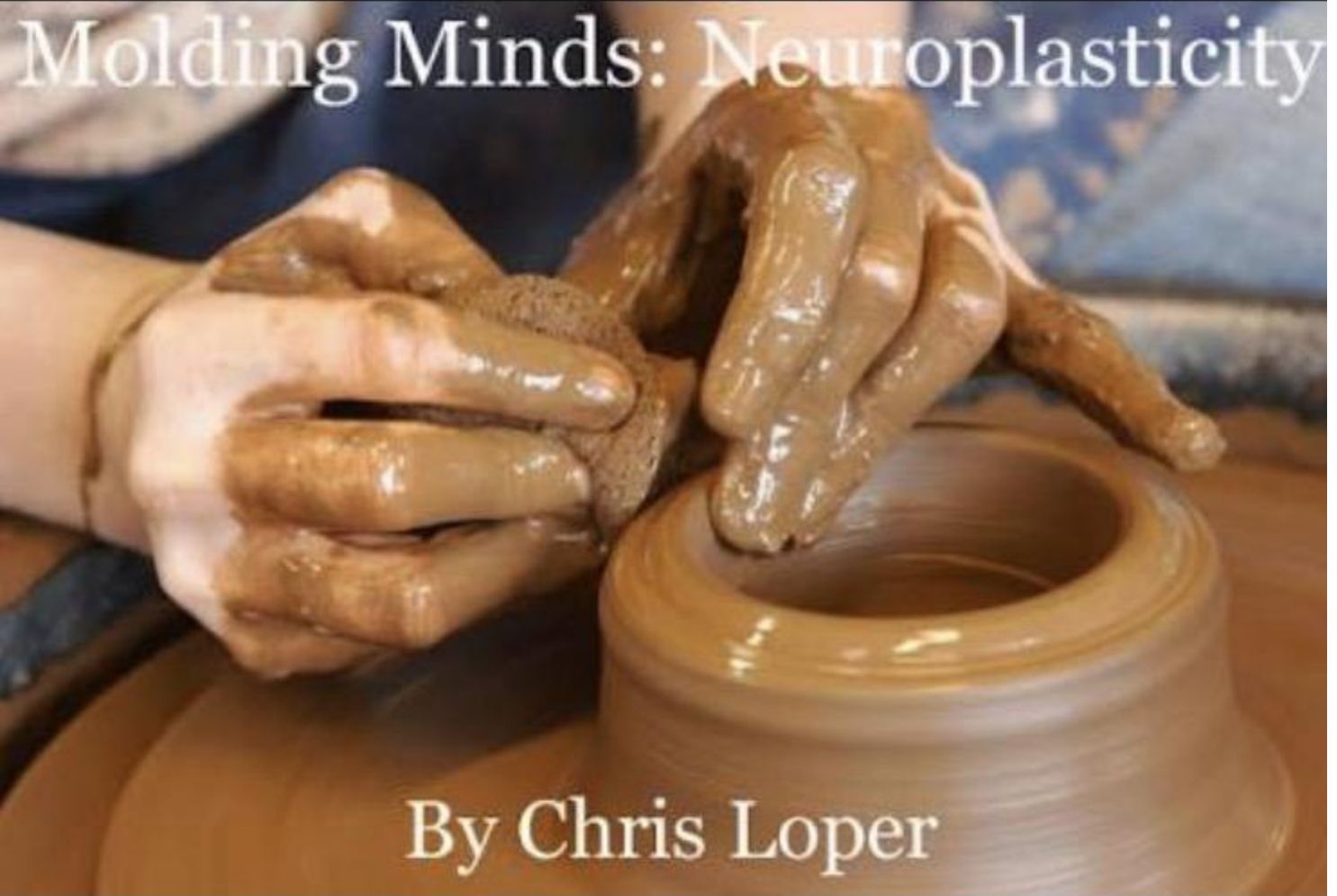


Time-lapse MRI images of human-brain development between ages five and 20 show the growth and then gradual loss of gray matter, which consists of cells that process information. (Red areas contain more gray matter, blue areas less.) Paradoxically, the thinning of gray matter that starts around puberty corresponds to increasing cognitive abilities. This probably reflects improved neural organization, as the brain pares redundant connections and benefits from increases in the white matter that helps brain cells communicate.

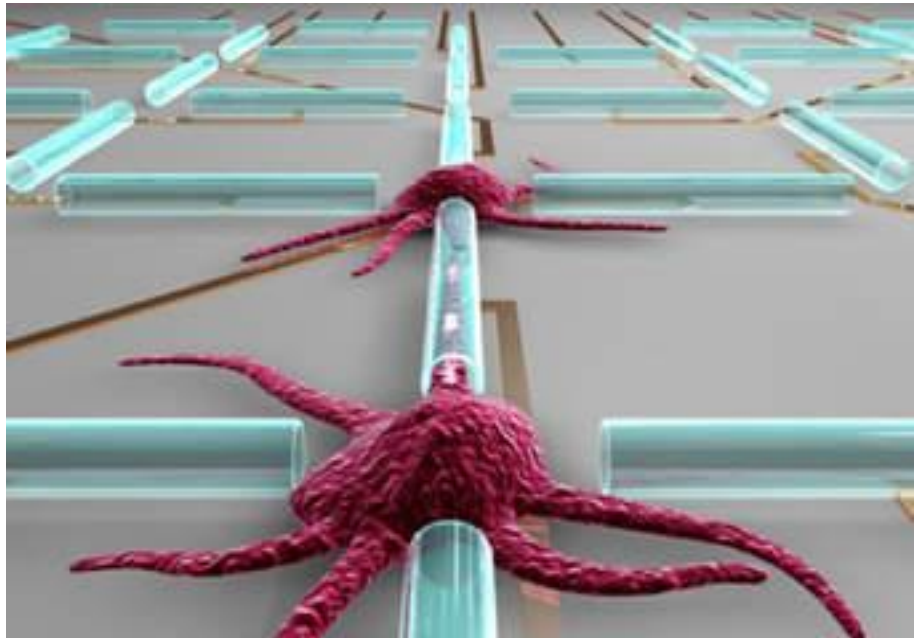
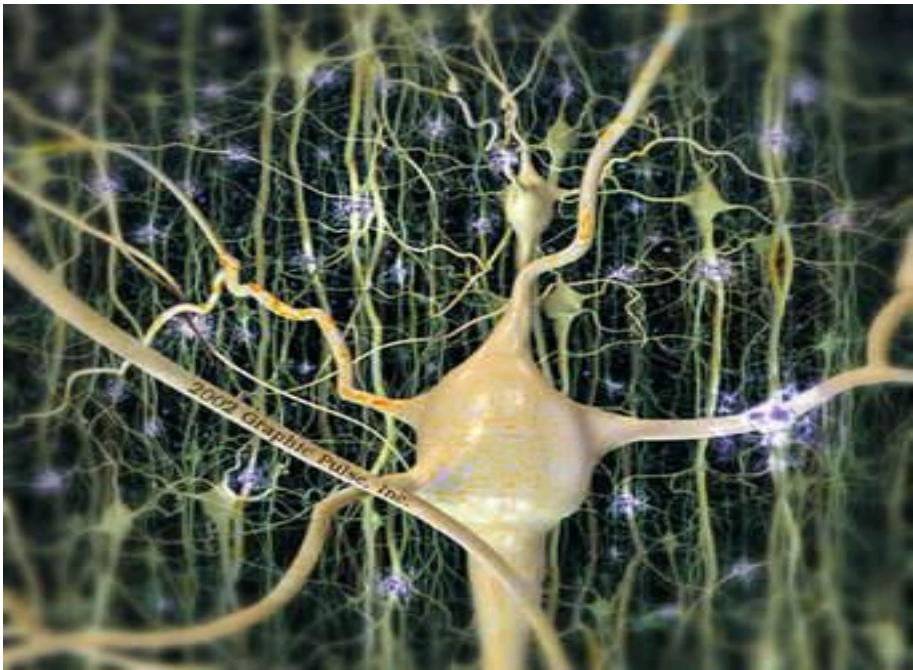
There are also gender differences in brain development. As Urien and Jensen explain, the part of our brain that processes information expands during childhood and then begins to thin, peaking in girls at roughly 12 to 14 years old and in boys

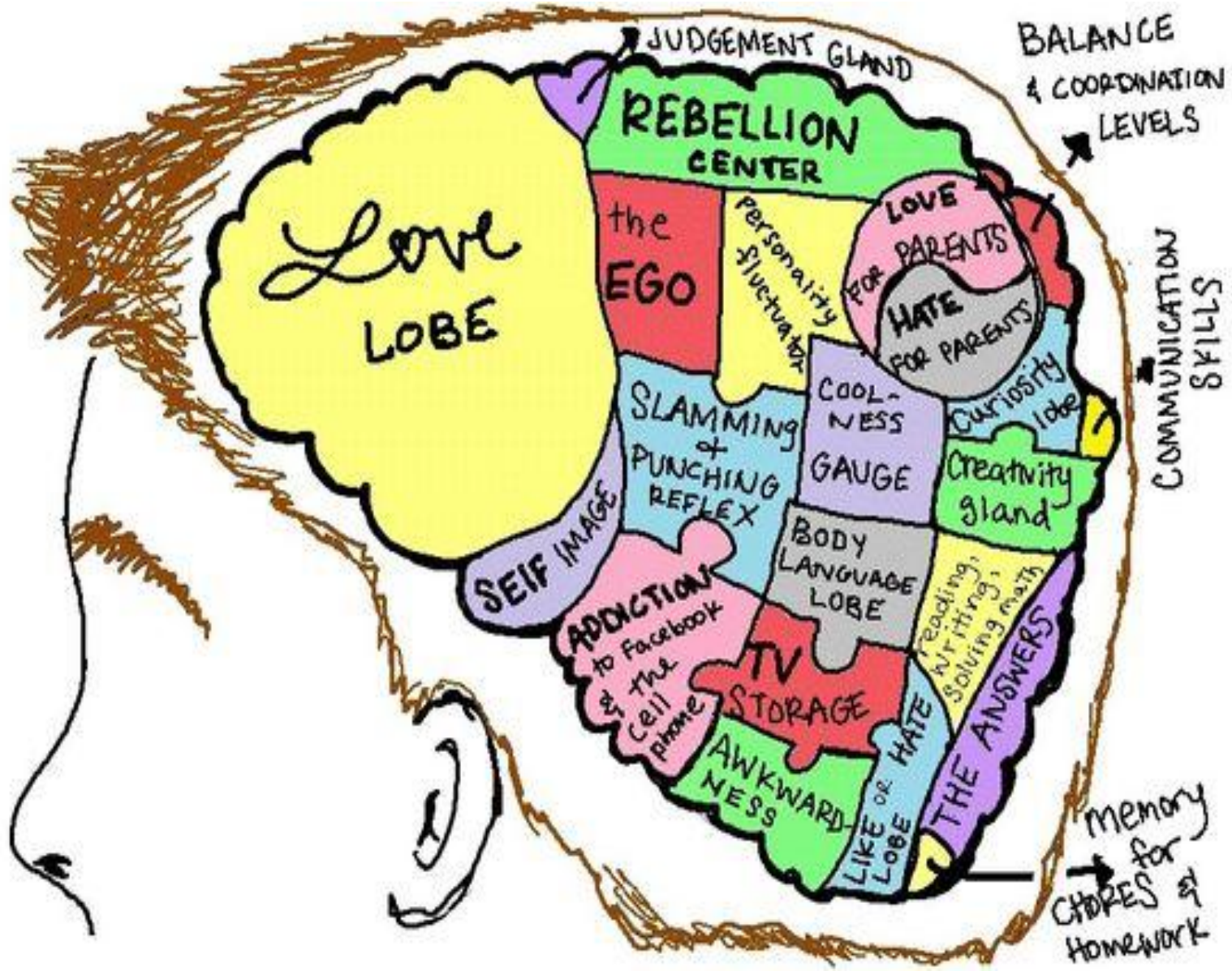
tunities to reach them.

# Molding Minds: Neuroplasticity

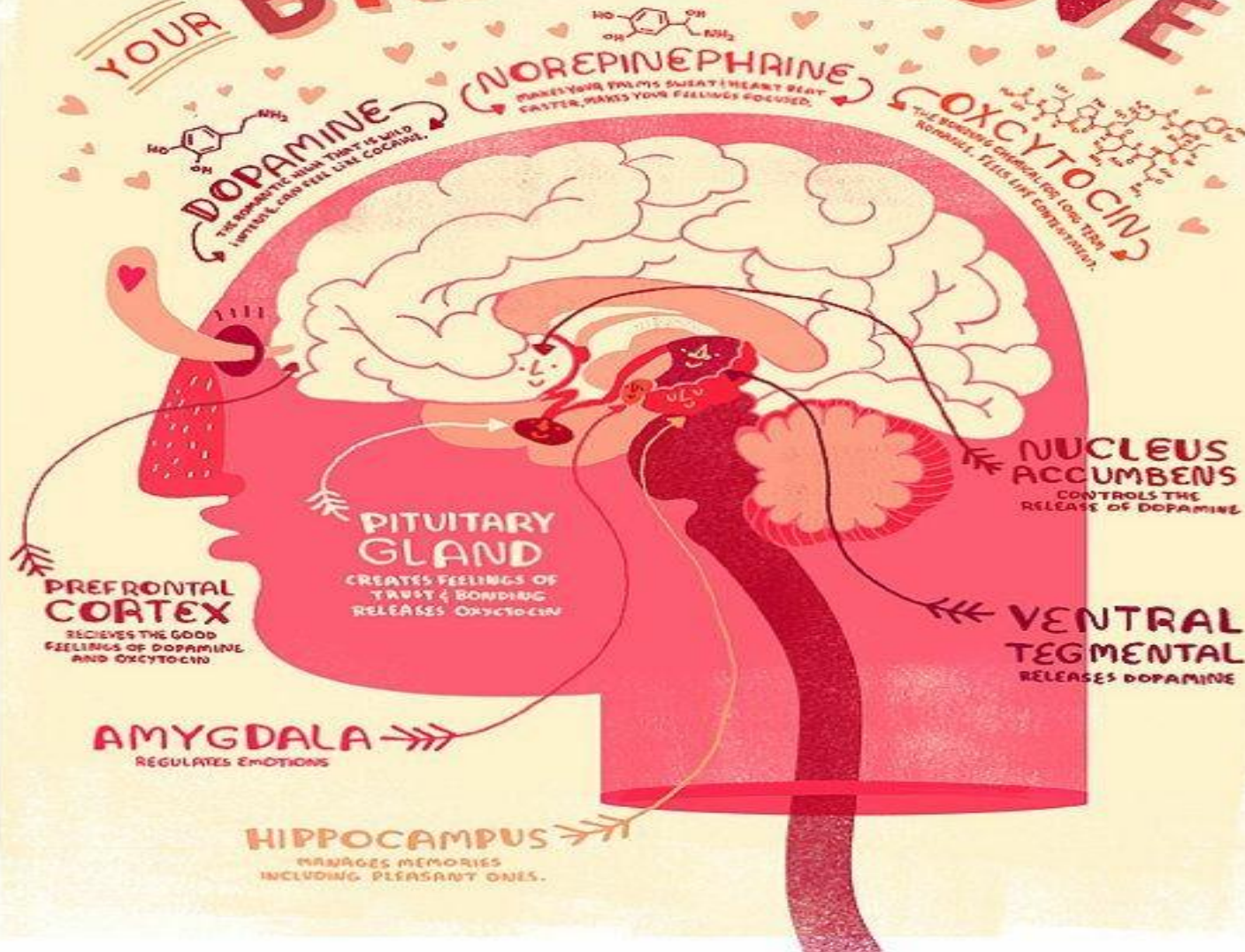


By Chris Loper





# YOUR BRAIN IN LOVE



# Healthy Relationships

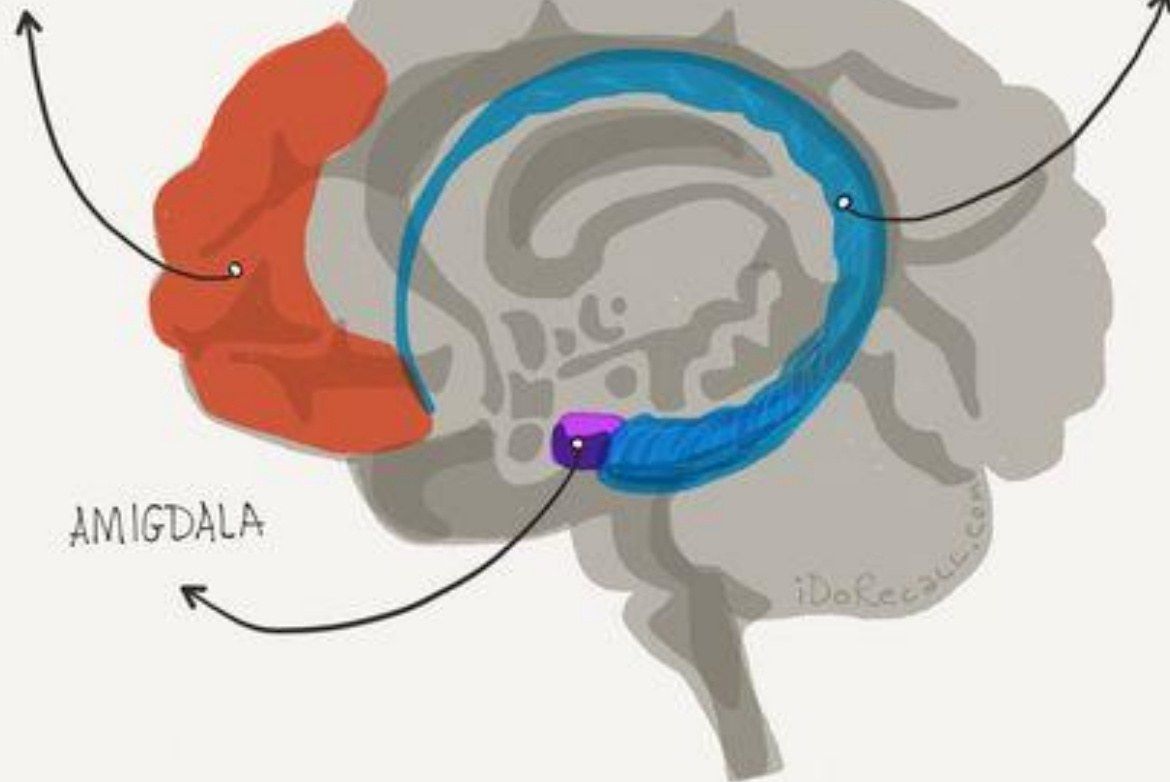




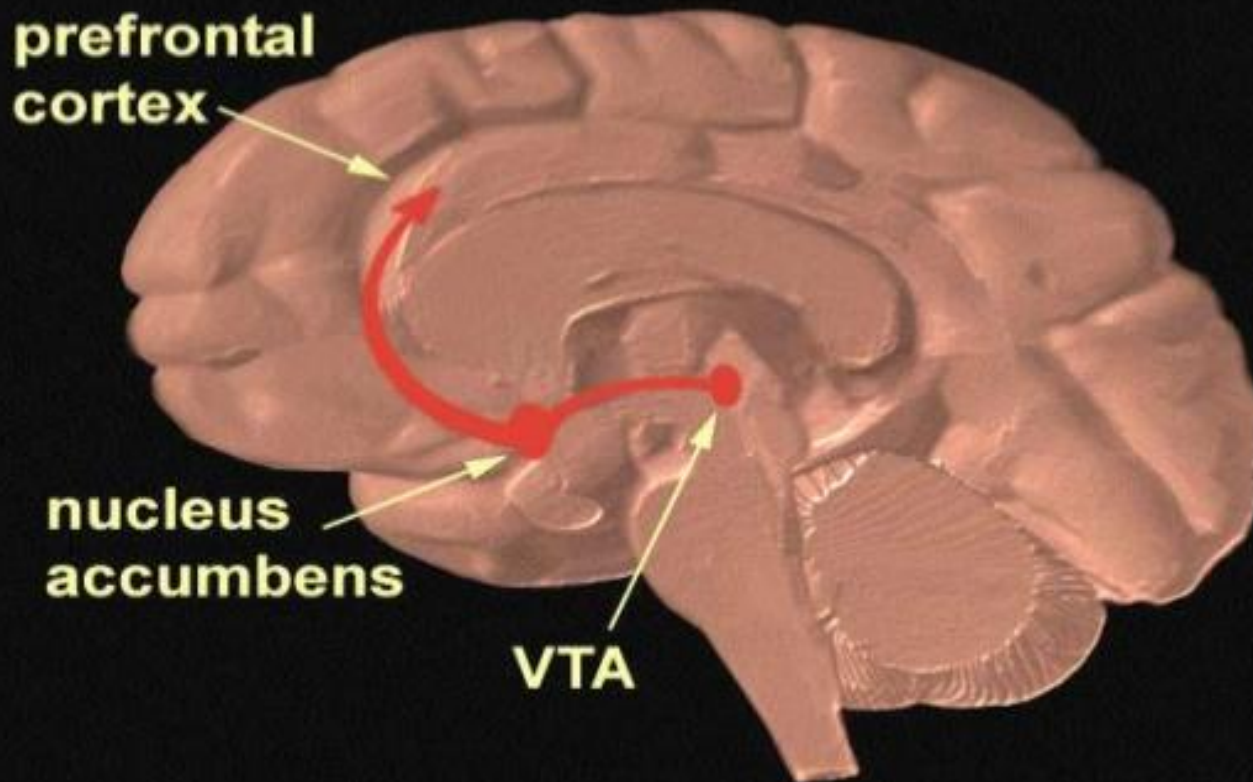
PREFRONTAL  
CORTEX

HIPPOCAMPUS

AMIGDALA



# THE REWARD PATHWAY



# Risky behaviours

- *Accidents*
- *Intended injuries*
  - *Violence*
  - *Homicide & Suicide*



# *Drugs cost you more than just*



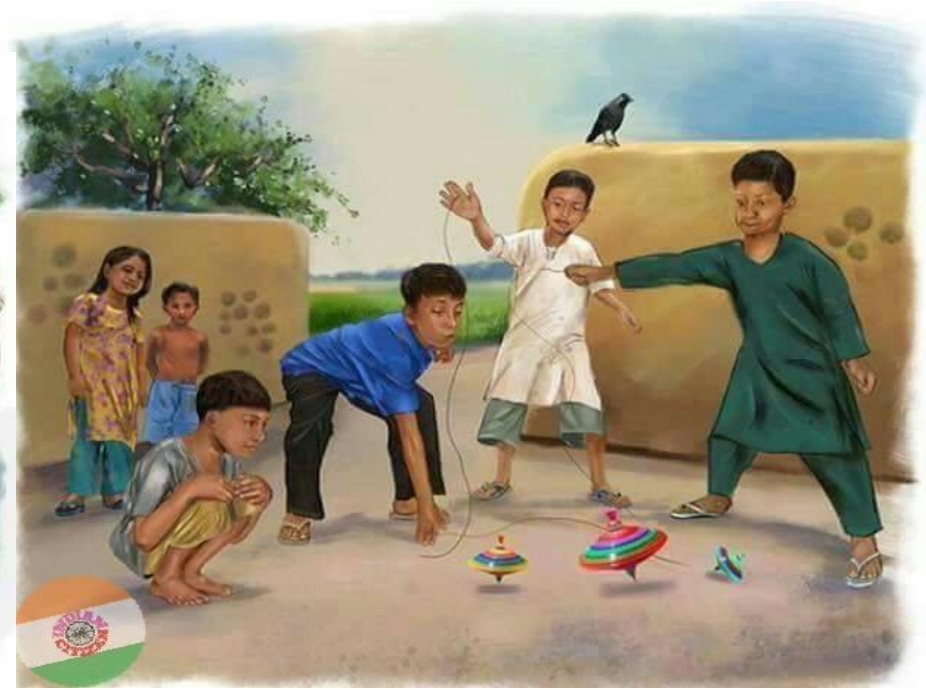
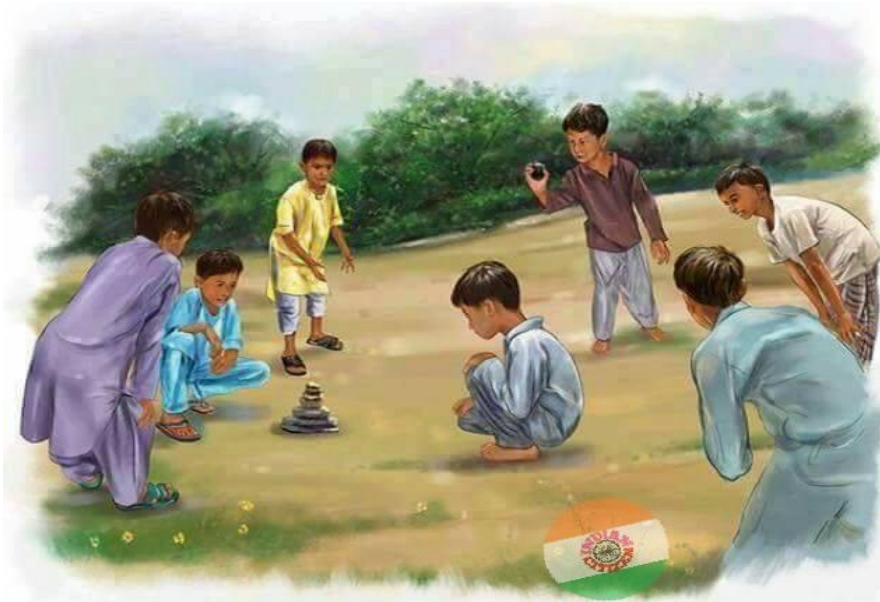




teasing RUMORS  
gossiping  
insults

**CYBER BULLYING**

LIES threats  
name-calling  
harassment  
mean words







# Giving every child a healthy start to life

ICPH is an innovative model of integrating primary care with public health, where the best of global knowledge steers our comprehensive interventions for children



Primary Care | Public Health Practice |  
Academic & Capacity Building Programs | Research & Policy